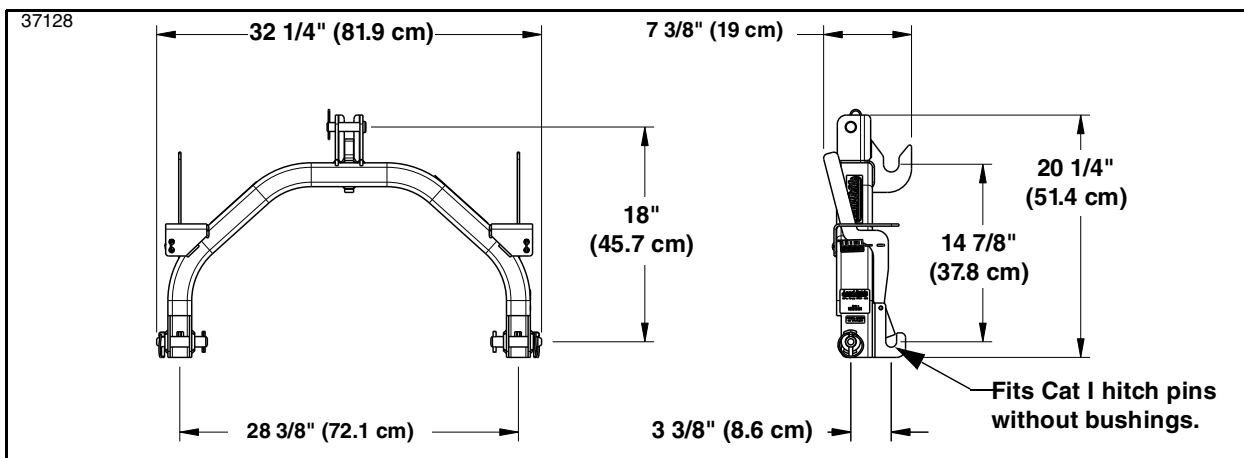
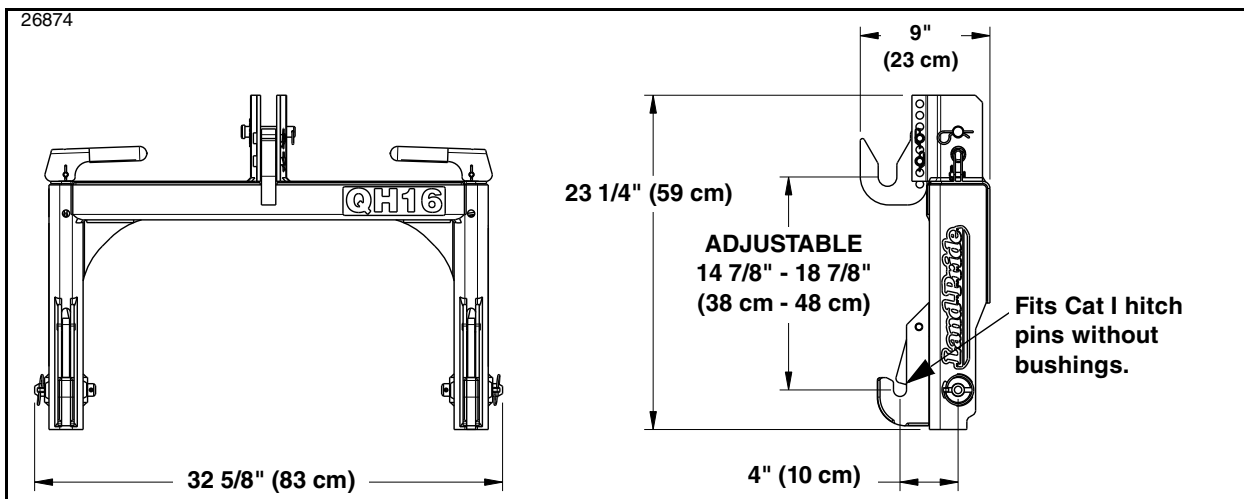


**Quick Hitch Specifications**

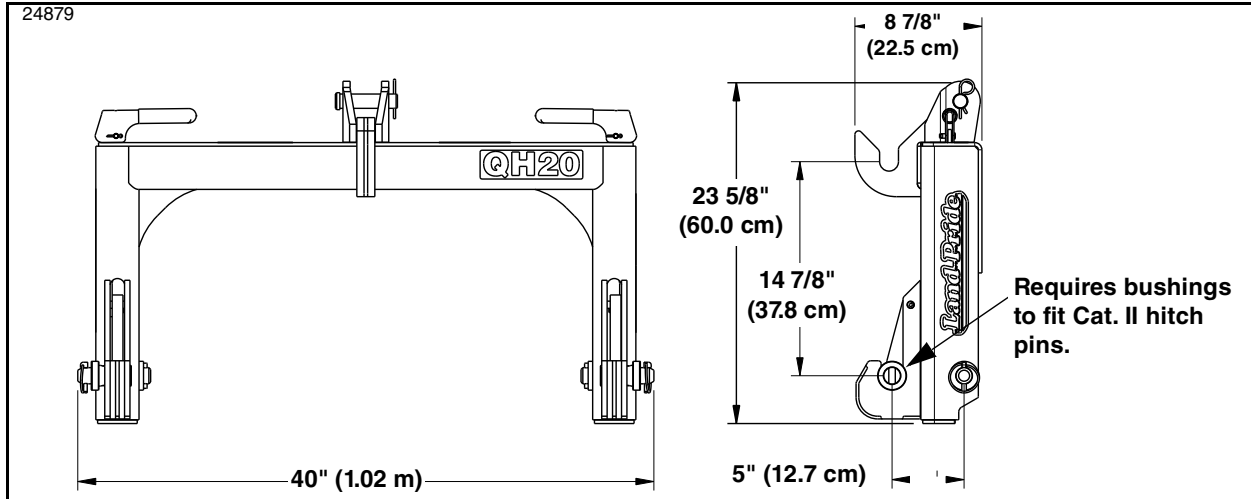
Specifications & Capacities				
Model Nos.	QH05	QH16	QH20	QH30
3-Point hitch	7/8" Category 1 w/o bushings	7/8" Cat. 1 w/o bushings	1 1/8" Category 2 with bushings	1 7/16" Category 3 w/o bushings
Maximum lift Capacity	At 24" (61.0 cm) back from implement's lower 3-point hitch pins. Implement hitch must match hitch category listed above.			
	700 lbs (318 kg)	2000 lbs (907 kg)	3600 lbs (1633 kg)	13600 lbs (6169 kg)
Overall width	32 1/4" (82 cm)	32 5/8" (83 cm)	40" (102 cm)	46 1/4" (117 cm)
Overall height	20 1/4" (51 cm)	23 1/4" (59 cm)	23 5/8" (60 cm)	28 5/8" (73 cm)
Overall length	7 3/8" (19 cm)	9" (23 cm)	8 7/8" (23 cm)	9 1/2" (24 cm)
Weight without floating top link	37 lbs (17 kg)	70 lbs (32 kg)	120 lbs (54 kg)	175 lbs (79 kg)
Optional floating top link	Available 3 lbs (1.5 kg)	Available 3 lbs (1.5 kg)	Available 5 lbs (2.3 kg)	Not Available
Top hitch hook	Stationary	Adjustable	Stationary	Stationary
Hitch pin lock	Automatic on implement's lower 3-point hitch pins			



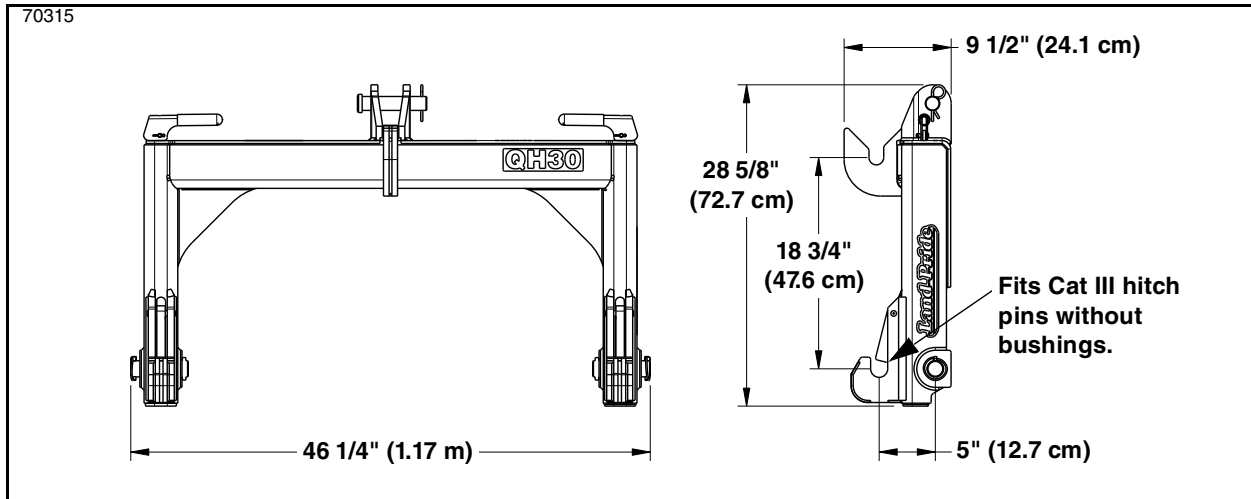
**QH05 Quick Hitch**  
Figure 5-1



**QH16 Quick Hitch**  
Figure 5-2



QH20 Quick Hitch  
Figure 5-3



QH30 Quick Hitch  
Figure 5-4